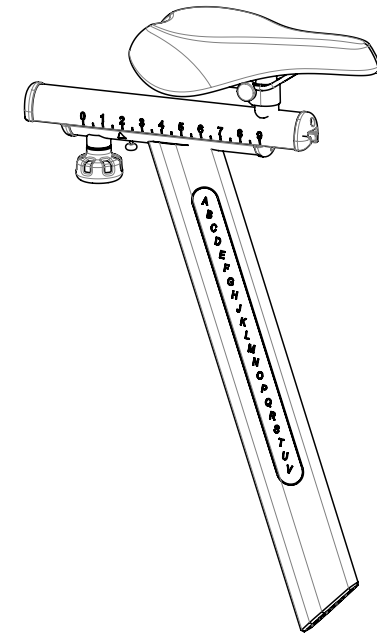
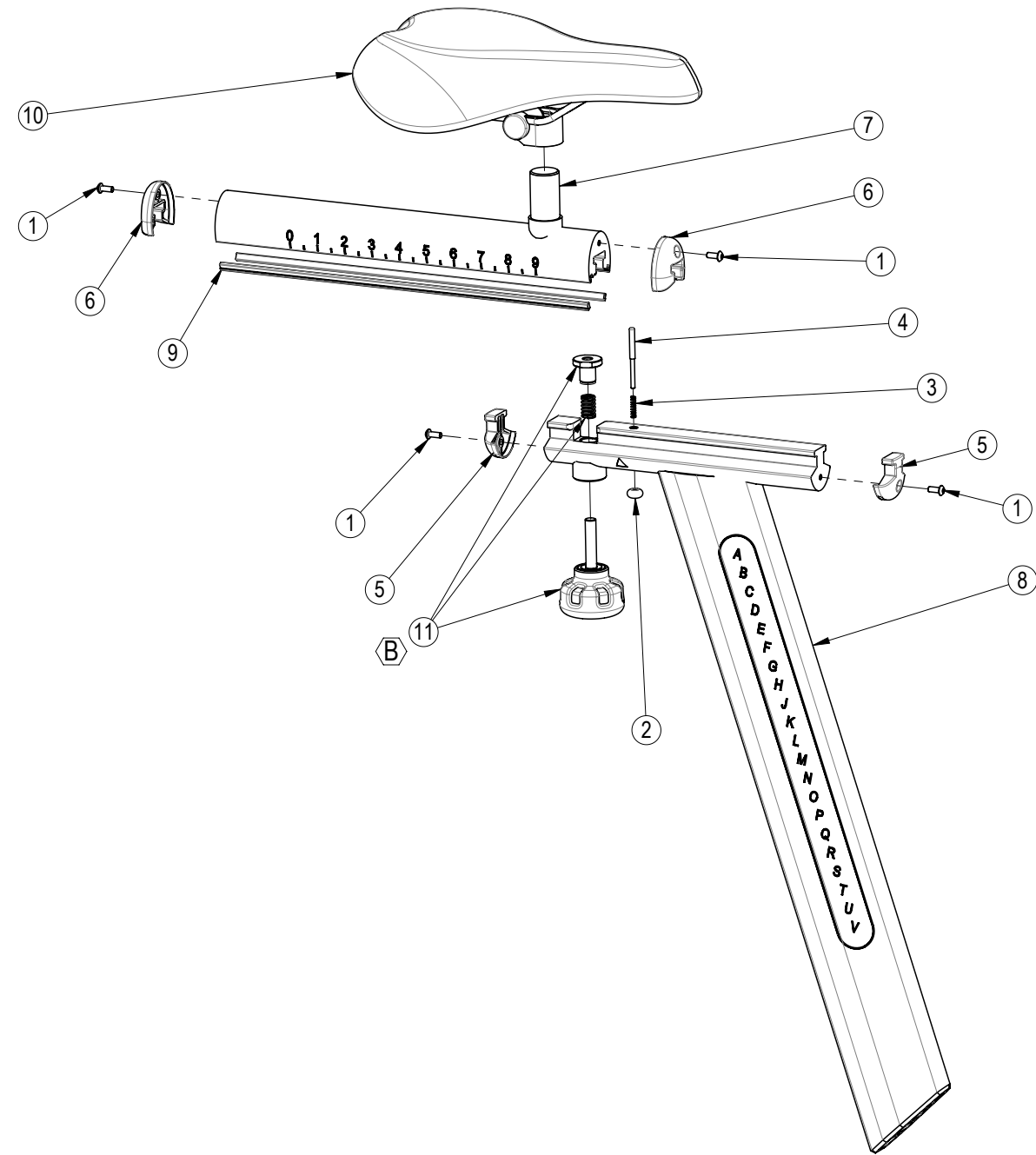


REVISION HISTORY				
REV	DATE	DESCRIPTION	ECO	BY
A	12/5/2011	PRODUCTION RELEASE	13607	DMM
B	3/23/2012	ADDED KIT 740-8263-KT	13720	DMM



ITEM NO.	PART NUMBER	DESCRIPTION	QTY
1	740-7181	SCREW, M4X0.7X10, BHC, HE, SS	4
2	740-7270	KNOB, SEAT SLIDER, STOPPER	1
3	740-7271	SPRING, SEAT SLIDER, NXT	1
4	740-7526	PIN, STOP, SEAT SLIDER	1
5	740-7651	END CAP, SLIDER, MALE	2
6	740-7652	END CAP, SLIDER, FEMALE	2
7	740-7934	WELDMENT, SEAT SLIDER, SPINNER	1
8	740-7937	WELDMENT, SEAT POST	1
9	740-8076	INSERT, SLIDER, HBAR AND SEAT	2
10	740-8078	SADDLE, SPINNER, BLADE	1
11	740-8263-KT	KIT, SEAT KNOB, F/A ADJUST, SPINNER	1

NOTICE OF PROPRIETARY INFORMATION
 THIS DOCUMENT SHALL NOT BE REPRODUCED NOR
 SHALL THE INFORMATION CONTAINED HEREIN BE USED
 BY OR DISCLOSED TO OTHER EXCEPT AS EXPRESSLY
 AUTHORIZED BY CORE INDUSTRIES INC, D.B.A. STAR TRAC.

DOCUMENT STATUS:

NOTES:

CLASS OF WORK	UNLESS OTHERWISE SPECIFIED DIMS ARE IN mm. TOLERANCES FOR MEASURE OF LENGTH ARE:							ANGLES = ±2°
	0.5 to 3	> 3 to 6	> 6 to 30	> 30 to 120	> 120 to 400	> 400 to 1000	> 1000 to 2000	
FINE	±0.05	±0.05	±0.1	±0.15	±0.2	±0.3	±0.5	----
MEDIUM	±0.1	±0.1	±0.2	±0.3	±0.5	±0.8	±1.2	±2
COARSE	±0.2	±0.3	±0.5	±0.8	±1.2	±2	±3	±4
VERY COARSE	----	±0.5	±1	±1.5	±2.5	±4	±6	±8

MATERIAL
SEE BOM

FINISH
N/A

VENDOR:

P/N:

THIRD ANGLE PROJECTION



DRAWN	INITIAL DMM	DATE 03/07/2011
CHECKED		
APPROVED		

CORE IND INC., DBA 14410 Myford Road
 Irvine CA 92606

STAR TRAC PART NO. **740-7933** REV **B**

TITLE **ASSY, SEAT POST, BLADE**

U.O.M. MM SCALE: 1:5 | SHEET 1 OF 1 | SHEET SIZE: B